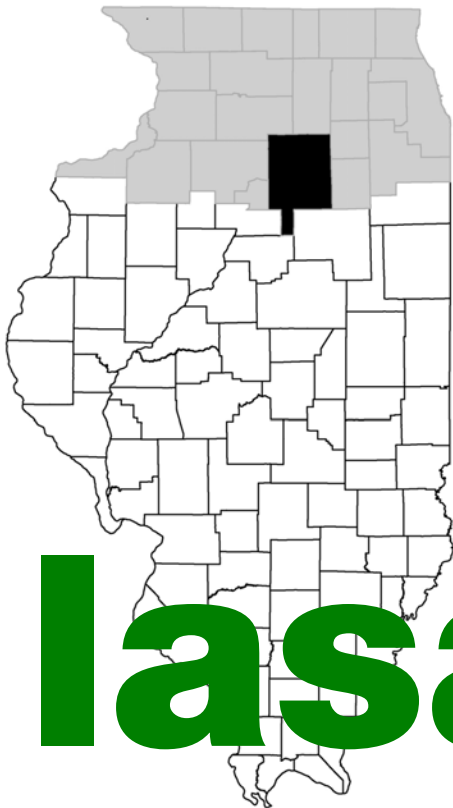


Northern Illinois Market Facts 2008

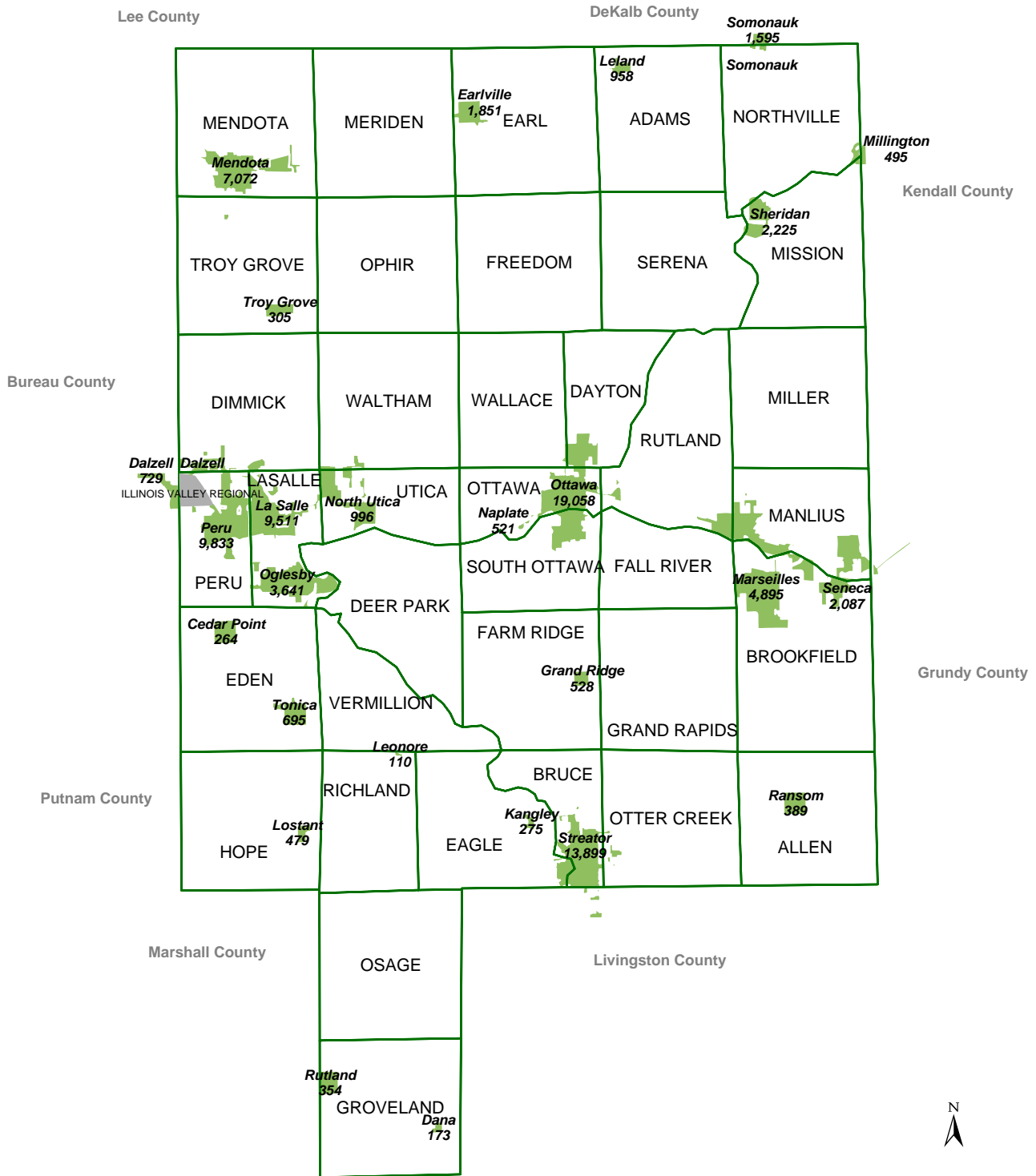
The screenshot shows the LaSalle County website homepage. At the top, there is a navigation menu with dropdown menus for various departments: County Board Chairman, Full County Board, Standing Board Committees, Auditor, Financial Information, Central Services, Chief Assessment Officer, Circuit Clerk, County Clerk, Emergency Management Agency, Environmental Svcs/Land Use, Events and Tourist Information, Health Department, Highway Department, Nursing Home, Parks Department, Recorder, Regional Office of Education, Resources, Sheriff, State's Attorney, Tax Inquiry Directory, and Treasurer. The main content area features the LaSalle County logo, contact information for the Etna Road Complex (707 East Etna Road, Ottawa, IL 61350-1047), and a list of complex hours. There are also links for 'Questions/Comments', 'Link to us?', 'Map to the Complex', and 'Actuarial Services RFP'. A 'LaSalle County Comprehensive Plan - Draft' link is present. A 'Welcome from Board Chairman Jerry Hicks' section includes a photo of the chairman and a link to 'A memo from the Chairman'. An 'Election Results Inquiry System' link is also visible. A search bar is located on the right side. At the bottom, there is a weather widget for Ottawa, IL, showing clear conditions, 50°F / 10°C, and a copyright notice for 2007 LaSalle County Board.



lasalle

LaSalle County

Places, Townships, and Airport



Note: Figures in each place are 2006 Census population estimates. Data for split places are no longer reported by each county's portion. Map prepared by the Center for Governmental Studies, NIU-Outreach.



LASALLE COUNTY

Population Density 2007
100.2 persons
per square mile

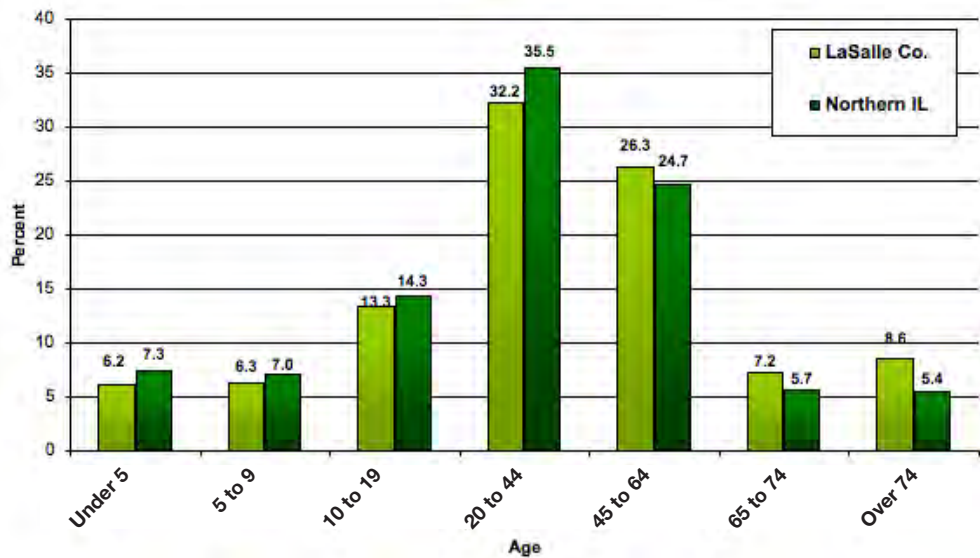
Median Age of
County Population
39.35

Figure 26A Population Trends and Projections

	Total 1990	Total 2000	Total 2007 (est.)	Total 2020 (proj.)
La Salle Co. Population	106,913	111,509	113,688	119,077
Percent of Northern Illinois	1.3%	1.2%	1.2%	1.1%

Sources: U.S. Census Bureau; Woods & Poole 2007
Note: 1990, and 2000 are actual census counts. Census 2007 estimate = 113,065.
2007 is a Woods & Poole estimate; 2020 is a Woods & Poole projection.

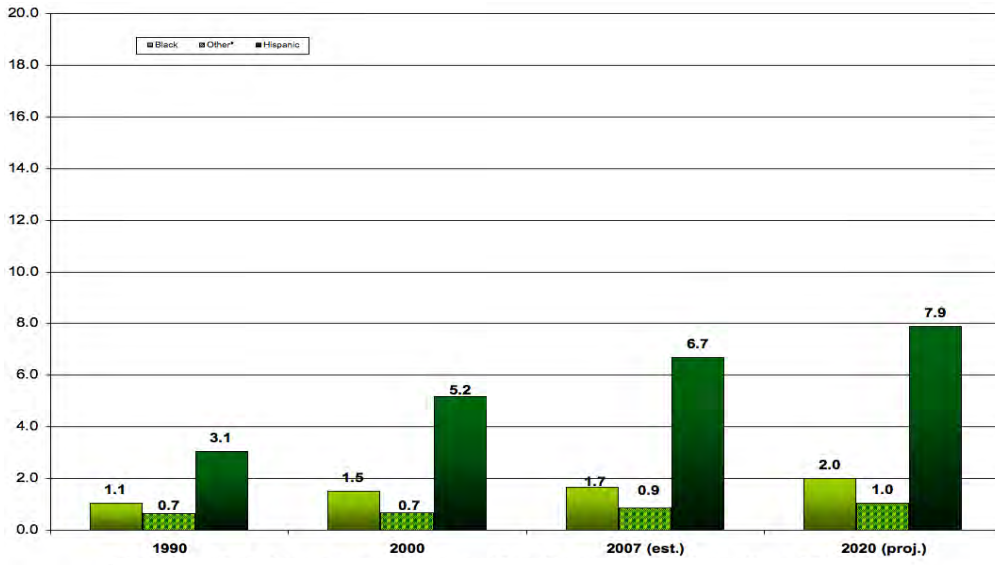
Figure 26B Age Distribution in 2007 by Percent of Population



Source: Woods & Poole, 2007
Note: Numbers may not add up to 100% due to computer rounding.

**LASALLE
COUNTY**

Figure 26C County Minority Population by Percent



Sources: 1990, 2000 Census; Woods & Poole, 2007
 *Other is Asian/Pacific Islander and American Indian.

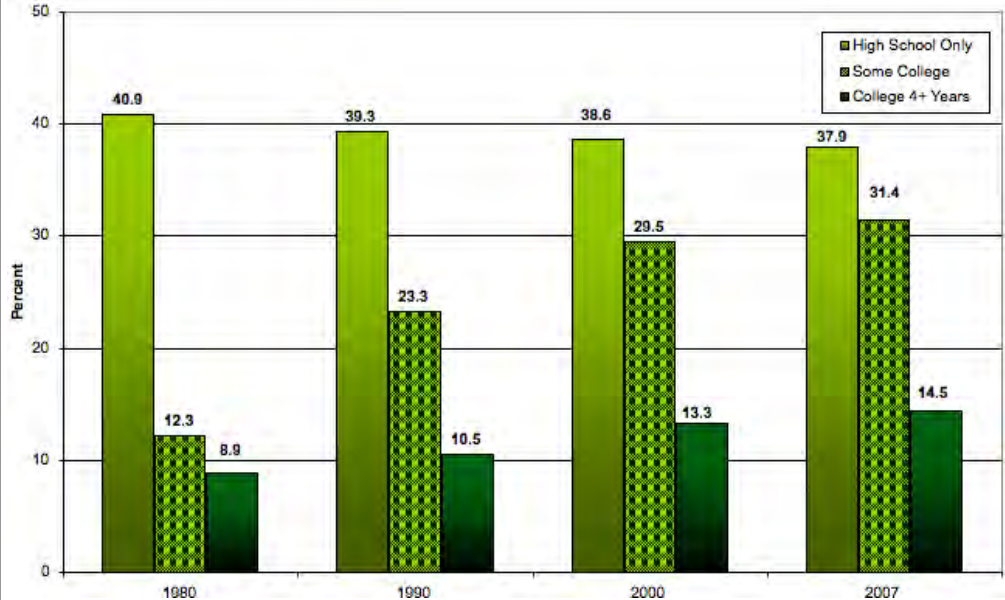
Figure 26D Household Trends and Projections

	1990	2000	2007 (est.)	2020 (proj.)
Number of Households	41,284	43,417	45,221	48,652
Percent of Northern Illinois	1.4%	1.3%	1.3%	1.2%
La Salle Co.: Persons per Household	2.53	2.49	2.45	2.37
Northern Illinois: Persons per Household	2.67	2.62	2.57	2.50

Sources: 1990, 2000 Census; Woods & Poole, 2006

**LASALLE
COUNTY**

Figure 26E Highest Educational Attainment: Percent of Persons Age 25 and Over



Sources: U.S. Census Bureau; Easy Analytic Software, Inc., 2007
See Figure 3 in the Regional Section for comparisons.

Figure 26F General School Enrollment Information for LaSalle County

K-12 Districts	3
Elementary Districts	18
High School Districts	5
Special Education and Other Cooperative Districts	2
Public School Student Enrollment 2007-2008	17,460
Largest District Enrollment	2,087
Smallest District Enrollment	67
<hr/>	
Number of Non-Public Schools*	7
Non-Public School Enrollment 2006-2007	1,156
<hr/>	
Total 2006 Equalized Assessed Valuation Per Student	\$124,630
Estimated Average Property Tax Rate per \$100 in Assessment Year '06	\$8.14

Sources: IL State Board of Education Fall Housing Reports 2007-08; 2006 PTAX-250; CGS
Note: Data reflect all types of districts and have differing grade levels included.
Special Education/Other Cooperatives are not included in the range of largest to smallest.
*These data reflect only those schools reporting data 2006-2007.

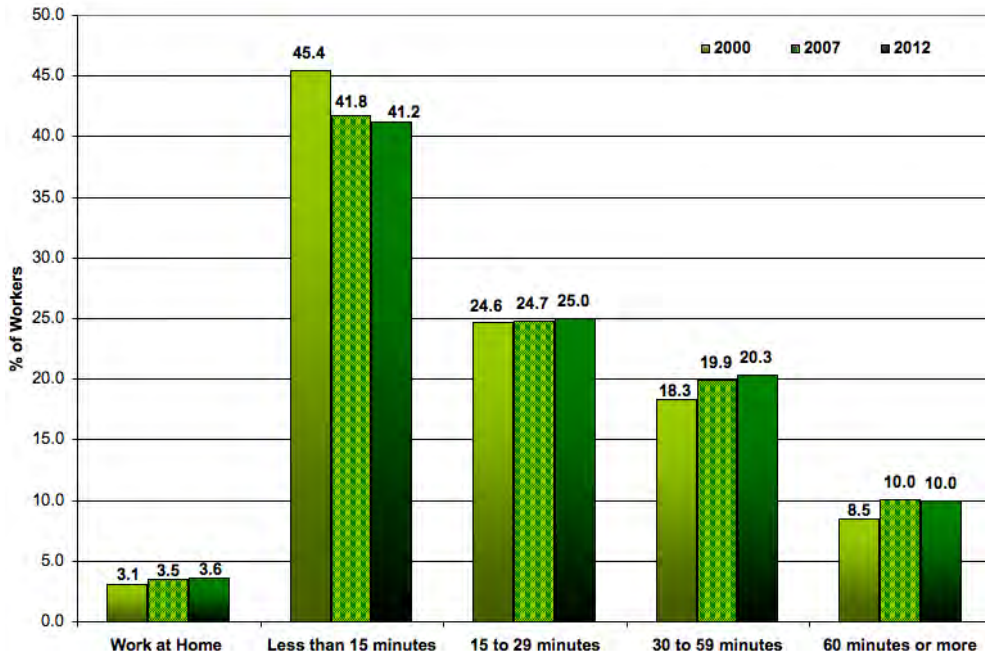
**LASALLE
COUNTY**

Figure 26G Labor Force Participation Characteristics

	1990	2000	2007
Total in Civilian Labor Force	49,556	53,979	54,553
% of persons 16 and over	60.1	62.1	62.3
% of persons 65 and over	10.8	11.6	9.8
% of women in labor force	51.1	56.0	56.7
% of labor force that is female	44.3	45.8	45.7
% self-employed	8.1	6.7	6.1
% white collar	45.8	51.3	49.1

Sources: U.S. Census Bureau, 2000; Easy Analytic Software, Inc., 2007;
Longitudinal Employer - Household Dynamics, 2007
Note: For residents 16 years old and over by place of residence.

Figure 26H Travel Time to Work, 2000, 2007, 2012



Source: Easy Analytic Software, Inc., 2007

LASALLE COUNTY

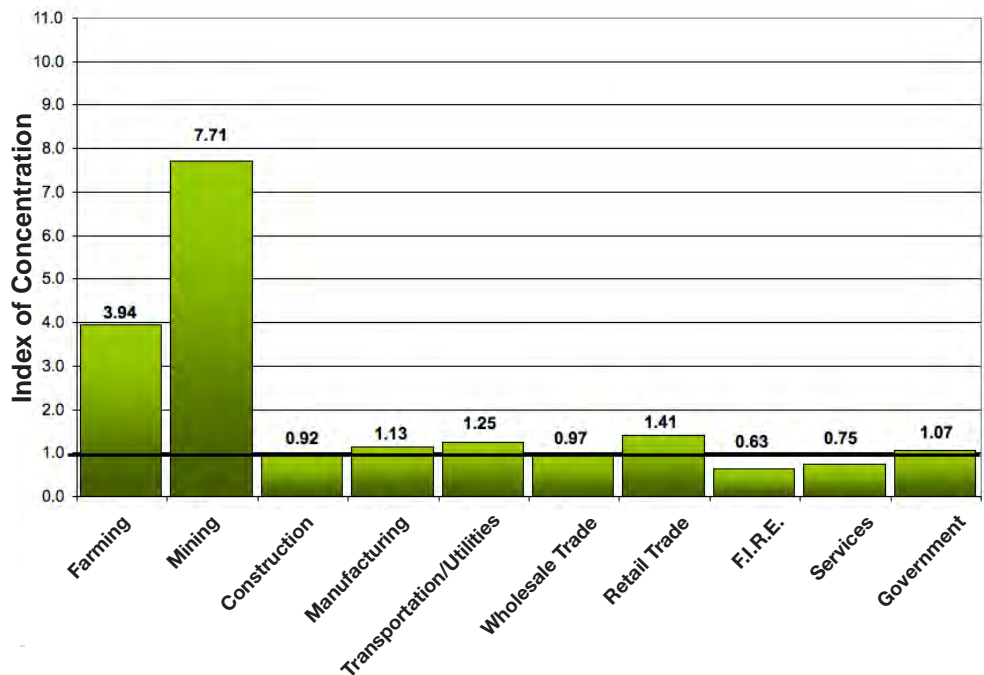
Figure 26I Estimated Distribution of County Employment by Industry (Percent)

	La Salle 1990	N IL 1990	La Salle 2000	N IL 2000	La Salle 2007	N IL 2007
Farming	4.7%	0.6%	3.5%	0.5%	3.2%	0.4%
Ag Services/Forest & Fishing	1.0	0.6	1.2	0.8	1.5	0.8
Mining	1.1	0.2	0.8	0.1	0.7	0.1
Construction	4.3	4.7	4.9	4.9	4.7	5.1
Manufacturing	13.6	16.2	11.9	13.2	11.5	10.1
Transportation/ Utilities	6.1	5.5	7.1	5.8	6.5	5.2
Wholesale Trade	5.1	6.6	5.7	5.7	5.2	5.3
Retail Trade	21.8	15.5	22.0	14.7	20.9	14.8
F.I.R.E.	5.8	9.6	6.1	9.7	6.6	10.5
Services	24.8	28.7	25.4	33.8	27.8	36.8
Government	11.7	11.8	11.4	10.9	11.6	10.8
Total no. of jobs	50,385	4,863,719	59,040	5,626,109	60,497	5,840,376

Note: Columns may not add up to 100.0% due to rounding. In some cases, historical data have been re-estimated.

Source: Woods & Poole, 2007
Note: Employment measured by "place of work".

Figure 26J Concentration of County Employment by Industry Sectors, 2007

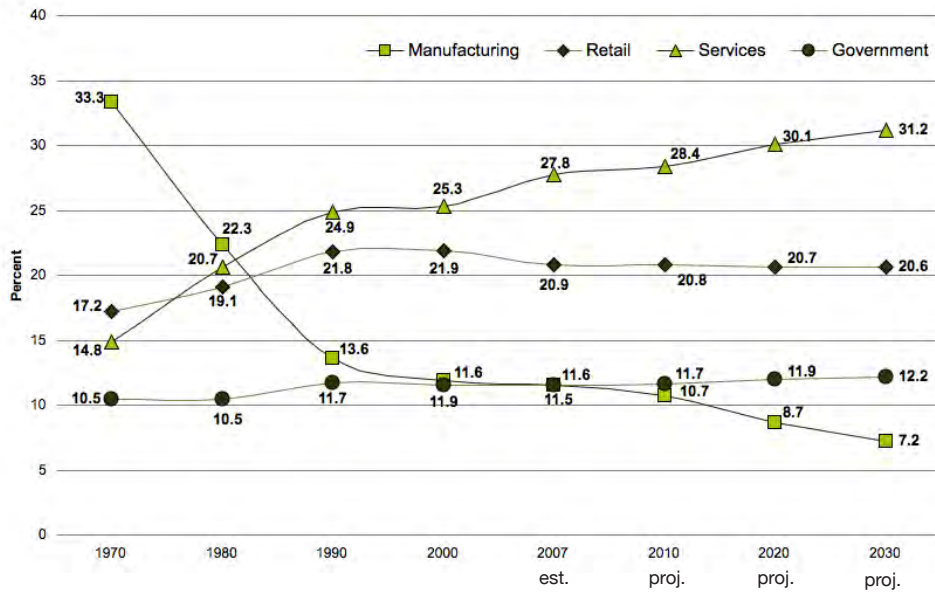


Note: Values greater than 1.0 indicate a local employment concentration greater than the same sector in the Northern Illinois region.

Sources: Woods & Poole 2007; Northern Illinois University

**LASALLE
COUNTY**

Figure 26K Historic Distribution of Employment by Industry Sectors (Percent)



Source: Woods & Poole, 2007

Figure 26L Local Economic Vitality

	County Highest Sales Growth Industry <i>Manufacturing</i>	County Highest Sales Growth Industry	Total Business
Business Startup Rate - 2006	6.74%	6.74%	5.66%
Business Startup Index - '05-07	0.78	0.78	0.54
Business Failure Rate - 2006	8.11%	8.11%	17.89%
Business Retention Index - '05-07	2.52	2.52	1.32
Sales Growth Index	2.53	2.53	0.86

Source: Bizminer.com, 2007

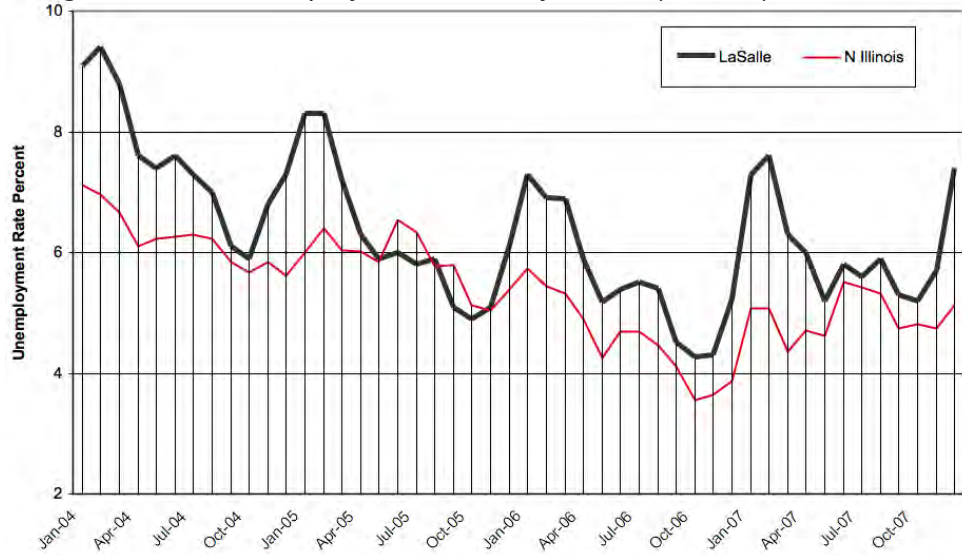
All indices are measured against U.S. Index of 1; higher local indices show more vitality. Startup Activity Rate measures the percentage of firms which began operations over the last year compared to the number of firms doing business in the area for which ages can be identified. The Startup Index is an indicator of an area's ability to generate economic dynamism from new sources. Business Failure Rate measures the number of businesses remaining in operation three years after the initial measurement date and count of local businesses. Areas with high vitality performance - many entrepreneurs, business in-migration, and new branch attraction often have low retention rates; while low growth areas have higher retention rates.

LASALLE COUNTY

State Annual Average

- 1998 - 4.5
- 1999 - 4.3
- 2000 - 4.3
- 2001 - 5.4
- 2002 - 6.5
- 2003 - 6.6
- 2004 - 6.1
- 2005 - 5.7
- 2006 - 4.5
- 2007 - 5.0

Figure 26M Unemployment Rates by Month (Percent)



Source: Illinois Department of Employment Security

Figure 26N Employment and Establishments for 2nd Quarter 2007

	Establishments	Employed	Wages (000's)
Total	2,890	45,755	\$204,084
Private Sector (NAICS)	2,727	39,070	306,639
GOODS-PRODUCING	560	9,191	105,749
Natural Resources and Mining	39	757	8,331
Construction	351	1,932	21,659
Manufacturing	170	6,502	75,759
SERVICE-PROVIDING	2,167	29,879	200,891
Trade, Transportation, and Utilities	709	12,108	94,869
Wholesale Trade (42)	149	2,404	23,415
Retail Trade (44,45)	399	7,282	36,516
Transportation & Warehousing (48,49)	149	1,564	15,102
Utilities (22)	12	858	19,836
Information	41	748	6,402
Financial Activities	232	1,922	15,002
Finance & Insurance (52)	152	1,490	12,828
Real Estate & Rental & Leasing (53)	80	432	2,174
Professional and Business Services	292	3,283	23,480
Professional, Scientific & Technical Services (54)	172	1,152	9,810
Management of Companies & Enterprises (55)	8	137	3,879
Administrative & Support & Waste Mngmt. (56)	112	1,994	9,791
Educational and Health Services	253	5,286	40,466
Educational Services (61)	31	398	1,908
Health Care & Social Assistance (62)	222	4,888	38,558
Leisure and Hospitality	358	5,071	14,128
Arts, Entertainment & Recreation (71)	40	333	1,098
Accommodation & Food Services (72)	318	4,738	13,030
Other Services	272	1,454	6,499
Unclassified	10	7	44
State & Local Government	127	6,330	52,264
State Government	5	951	10,476
Local Government	122	5,379	41,788
Federal Government	36	355	4,560

Source: 'Illinois At Work', Illinois Department of Employment Security

Includes all employment covered by IL Unemployment Insurance Act

*Data not available due to suppression for privacy

**LASALLE
COUNTY**

Figure 26O Comparison of Equalized Assessed Valuations by Class of Property, 2004, 2005, 2006 (Thousands of Dollars)*

	Assessment Years			% Change 05-06	2006 Average Tax Rate*
	2004	2005	2006		
Residential	\$1,034,109	\$1,124,732	\$1,227,313	9.1%	\$8.09
Farm	\$218,561	\$215,160	\$225,331	4.7%	\$7.37
Commercial	\$285,336	\$323,149	\$359,295	11.2%	\$8.44
Industrial	\$398,872	\$308,538	\$309,611	0.3%	\$6.10

Source: County Clerks' Offices PTAX 250
*Average tax rate per \$100 of equalized assessed valuation.

Figure 26P Residential Housing Information

	1990	2000	2007
Housing Units	43,827	46,438	48,790
% Vacant Units	5.8%	6.5%	5.7%
Median Housing Value	\$50,500	\$87,000	\$146,627
Median Sale Price of			
Single Family Homes	\$25,400	\$110,800	\$115,500
Occupied Rental Units	11,060	10,833	10,838
Median Rent	\$236	\$379	\$597

Sources: 1990, 2000 Census of Population and Housing;
Easy Analytic Software, 2007; Illinois Association of Realtors, 2007
Note: Price is 3rd quarter median sale price.

Figure 26Q Residential Migration Patterns

	1990	2000
Persons 5 yrs and older	99,698	104,571
Residing in same house as 5 yrs ago	64.3%	63.6%
Lived in a different house in the U.S.	35.3%	35.7%
Same State	31.3%	31.1%
Residing in different house, same county	21.9%	21.5%
Residing in a different county	9.3%	9.6%
Different State	4.1%	4.6%
Lived Abroad	0.3%	0.7%
% Foreign Born of Total Population	1.9%	2.7%

Source: 1990, 2000 Census

LASALLE COUNTY

Foreign Owned
Agricultural Land

1992 - 3 parcels
767 acres

1996 - 2 parcels
548 acres

2002 - 2 parcels
487 acres

Number of Farms in
LaSalle County

1982 - 2,146
1987 - 1,978
1992 - 1,669
1997 - 1,581
2002 - 1,478

Average Illinois
Price Per Bushel

2005 est. for 2004
Corn \$2.08
Soybeans \$5.76

2006 est. for 2005
Corn \$3.35
Soybeans \$6.40

2008 est. for 2007
Corn \$4.05
Soybeans \$11.00

Figure 26R Land in Farms, 1997 and 2002

	1997	% of Total Land	2002	% of Total Land
La Salle Co.(acres)	598,793	81.0	579,141	78.3
Northern Illinois (acres)	5,832,569		5,616,194	

Source: U.S. Department of Agriculture, 2002 Census of Agriculture

Figure 26S Harvested Cropland, Total Market Value of Crops Sold, 1997 and 2002

	1997	% of Region Total	2002	% of Region Total
La Salle Co. Harvested Cropland (acres)	545,366	11.0	531,717	11.0
Northern Illinois Harvested Cropland (acres)	4,936,291		4,851,468	
La Salle Co. Market Value of Products Sold (\$1,000)	186,724	8.1	161,703	7.7
Northern Illinois Market Value of Products Sold (\$1,000)	2,311,234		2,089,310	

Source: U.S. Census Bureau, 2002 Census of Agriculture
Note: Region now includes 22 Northern Illinois counties.

Figure 26T Major Crop Production

	2005	2006	2007
Corn			
Production (bushels)	42,895,400	53,489,800	64,170,000
Yield (bushels/acre)	139	182	186
% of Northern Total	10.9%	11.4%	11.1%
Soybeans			
Production (bushels)	10,579,700	12,349,000	9,384,000
Yield (bushels/acre)	47	53	46
% of Northern Total	14.2%	13.7%	14.7%

Source: Illinois Department of Agriculture, 2008

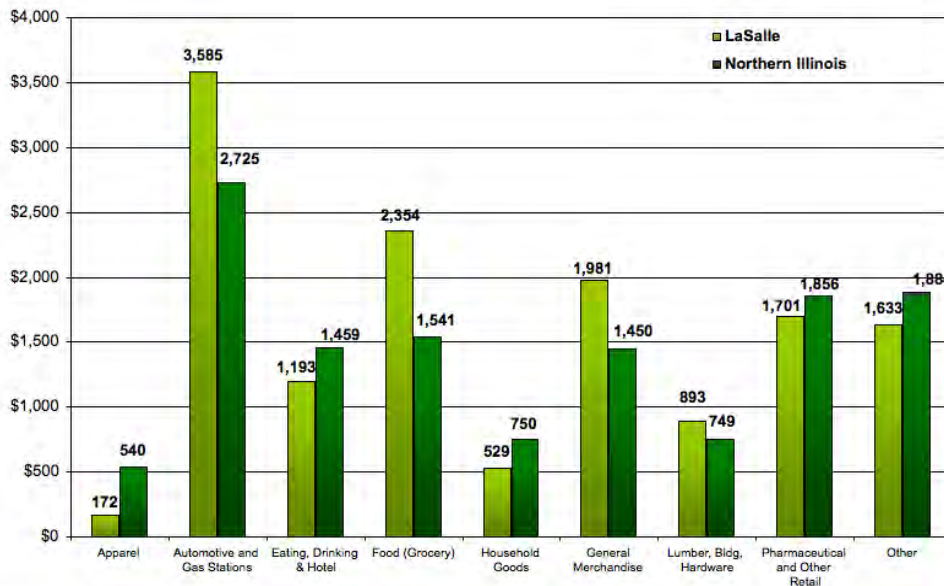
LASALLE COUNTY

Per Capita Retail Sales Totals

LaSalle County
\$14,040

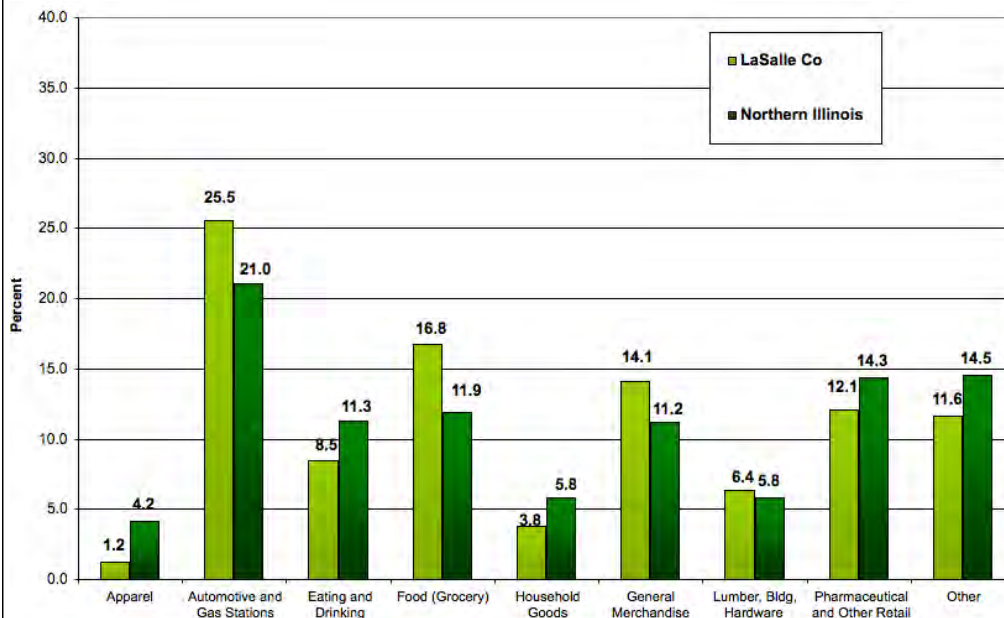
N Illinois Region
\$12,956

Figure 26U Per Capita Retail Sales by Retail Stores in County, 2007 (Dollars)



Sources: Illinois Department of Revenue, 2008; 2007 Census Estimates (2008)

Figure 26V Distribution of Sales by Retail Stores in County, 2007 (Percent)



Source: Illinois Department of Revenue, 2008

LASALLE COUNTY

Note: In some cases, historical data have been re-estimated.

Figure 26W Per Capita Income, 1990, 2000, and 2007 (estimated), Current Dollars

	1990	2000	2007 (est.)	Annualized % Change 2000-2007
La Salle Co.	\$15,957	\$ 25,618	\$ 32,288	3.4%
Northern Illinois	\$19,226	\$ 29,237	\$ 35,856	3.0%
Illinois	\$20,824	\$ 32,185	\$ 39,807	3.1%
		County	State	U.S.
2007 Wealth Index		88.87	107.37	100.00

Source: Woods & Poole, 2007

Figure 26X Household Income

	1990	2000	2007
Households w/Money Income	41,449	43,346	46,013
Less than \$25,000	45.3%	30.1%	24.4%
\$25,000-50,000	36.5%	30.4%	27.9%
\$50,001-100,000	15.3%	32.9%	35.3%
More than \$100,000	2.9%	6.7%	12.5%
Median Household Income	\$27,093	\$40,308	\$47,862

Sources: U.S. Census Bureau; Easy Analytic Software, Inc., 2007

LASALLE COUNTY

Figure 26Y County Amenities

Leisure and Recreation

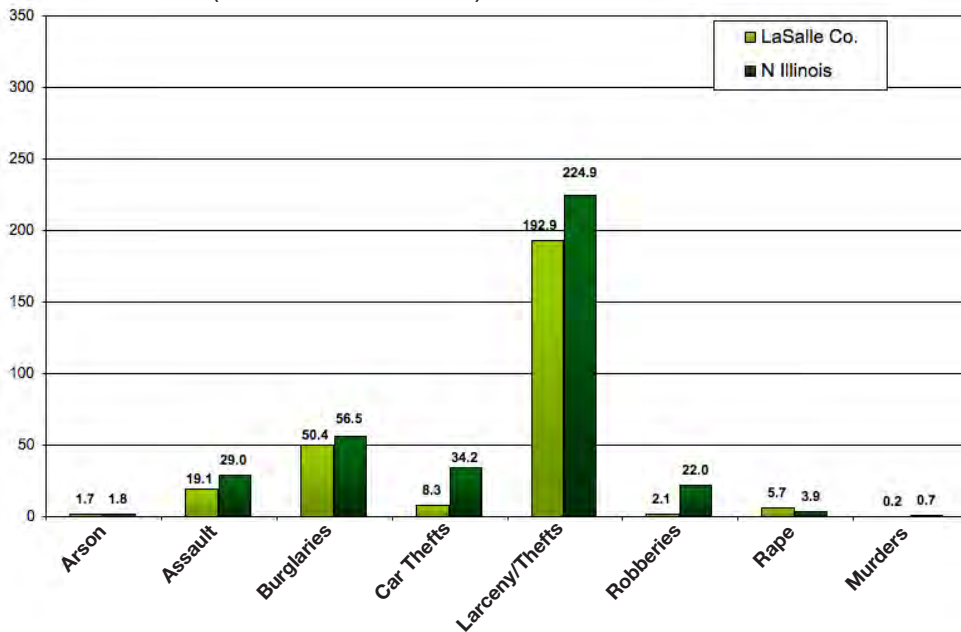
Museums	7
Forest Preserves/Conservation/Natural Areas	4
Golf Courses	5
State Parks	5

Agritourism

Wineries	2
Farmer's Markets	6
Seasonal Farm Attractions	NA

Note: All counts are estimates. Data changes as new facilities come on line.

Figure 26Z Criminal Offenses Reported in LaSalle County, 2007
(Per 10,000 Persons)



Sources: Illinois State Police, 2007; US Census 2006 Population Estimate

Total Reported Index Crimes for 2006: 3,171

Total Reported Index Crimes for 2005: 3,159

Total Reported Index Crimes for 2004: 3,235

Total Reported Index Crimes for 2003: 3,136

**LASALLE
COUNTY**

Figure 26AA State Revenue Collections and Expenditures in LaSalle County

Revenues Collected (millions of dollars)	
State Sales and Use Taxes (2007)	\$91.2
Individual Income Taxes (est. FY 2001)	59.6
State Motor Fuel Tax (est. FY 2001)	17.8
Local Property Tax (2006)	168.2
State Expenditures (millions of dollars)	
Education (1999-2000)	\$44.6
Public Aid (FY 2006)	59.4
State Payroll (2007)	60.8
Number of State Employees (2007)	1,190

Sources: Illinois Legislative Research Unit, Illinois County Data Book, 2002; State of Illinois Office of the Comptroller, 2007; County Clerk's Office - PTAX 250

Average Daily Miles
Travelled 2007
3,875,204

Change 2006-2007
0%

Figure 26AB Proposed New State Expenditures for Highway Improvements in FY2008*

La Salle County	Total	Per Mile
State Roads	\$ 33,840,000	\$ 97,029
Local Roads	\$ 5,680,000	\$ 2,442
Total Improvements	\$ 39,520,000	\$ 14,775
N IL Total Improvements	\$ 892,761,000	\$ 19,335

Source: Illinois Department of Transportation, Proposed Improvements for Illinois Highways FY 2008
*This is in addition to ongoing projects from previously funded improvement programs.
These funds do not include local funds used for highway improvements.

Figure 26AC Banking Resources in the County, 2007*

	La Salle Co.	N Illinois	Illinois
Commercial Banks	18	556	646
Offices	48	2,932	4,430
Deposits	\$1,5478,000	\$255,899,000	\$306,649,000
Savings Institutions	6	104	100
Offices	16	413	520
Deposits	\$927,000	\$18,611,000	\$32,113,000
Offices per 10,000 Population	5.7	3.5	3.2
Total Deposits/County Population	\$21,881	\$28,655	\$26,780
Share of N/Illinois Deposits	0.9%	81.0%	—
Deposit to Earnings Ratio	\$1,423	\$1,164	\$1,087
Deposit to Income Ratio	\$92	\$90	\$86

Sources: FDIC Data Website 2008; US Census Population Estimates 2006
*Data are for federally chartered banks only, dollars are in thousands.

**LASALLE
COUNTY**

Figure 26AD IRS Tax Returns Filed* by Migrating La Salle County Residents 2003-2006

Three Year Total (2003-2006)	Migrating Into County	Migrating Out of County	Net Change
Total Movement	6,673	6,808	-135
Domestic Migration	6,626	6,752	-126
Same State	5,089	4,535	554
Different State	1,537	2,217	-680
Foreign Migration	47	56	-9
Three Year Average (2003-2006)	Migrating Into County	Migrating Out of County	Net Change
Estimated Median Reported Income	\$37,538	\$35,669	\$1,869
Aggregate Reported Income (\$000)	\$83,661	\$81,028	\$2,633

Source: U.S. Internal Revenue Service, County Migration Flows 2007
 *This count is roughly equivalent to the number of households moving in and out of the county.

Figure 26AE Trade Area Analysis of Retail Sales, 2006

Merchandise Group	Potential Purchases by County Residents	Sales Reported by County Merchants	Surplus or Leakage	Ratio of County Per Capita Sales to State Per Capita Sales
General Merch.	\$1,513,132	\$1,889,821	\$376,688	108.76%
Food	\$1,432,271	\$2,559,347	\$1,127,076	155.61%
Eating/Drinking	\$1,294,211	\$1,293,255	-\$986	87.02%
Apparel	\$434,866	\$182,607	-\$252,259	36.57%
Home Furnishings	\$687,365	\$544,813	-\$142,552	69.02%
Building Merch.	\$783,636	\$1,013,470	\$229,834	112.62%
Auto./Fill. Stations	\$2,724,705	\$4,068,347	\$1,343,641	130.03%
Drugs/Other Retail	\$1,671,134	\$1,747,933	\$76,798	91.09%
Agriculture	\$1,554,225	\$1,587,804	\$33,59	88.96%
Manufacturing	\$324,224	\$249,300	-\$74,924	66.96%
Total Sales	\$12,419,770	\$15,136,665	\$2,716,896	106.06%

Sources: Illinois Department of Revenue, 2005, Kind of Business Report; U.S. Census Bureau County Business Patterns.

Note: Potential Sales is derived from the county population times the state average per capita spending in each category times the ratio of county per capita income to state per capita income.